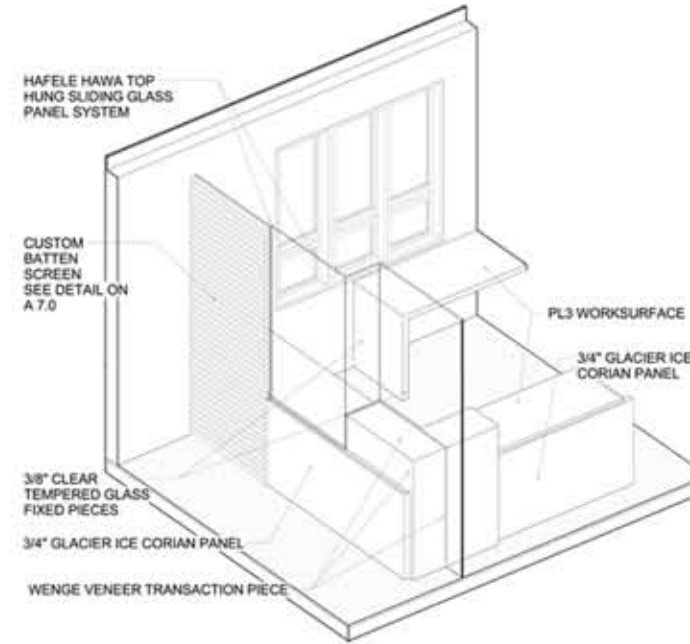




LOBBY RENDERING



ACTUAL PHOTO OF LOBBY



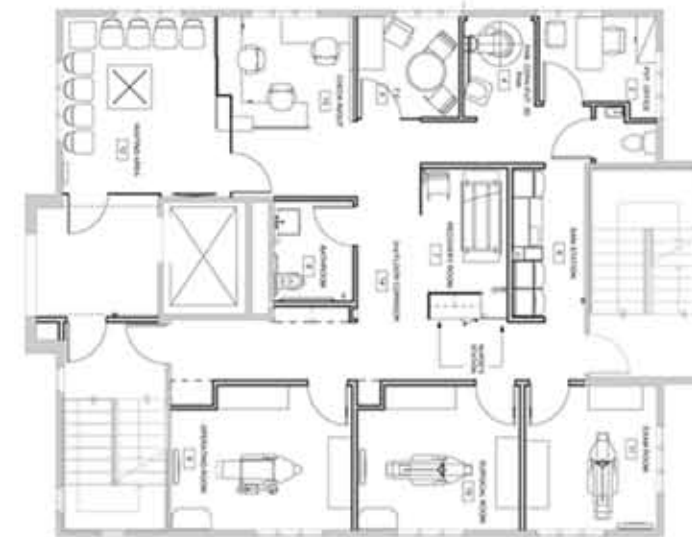
3D DETAIL OF RECEPTION DESK



PERSPECTIVE VIEW OF LOBBY



3D VIEW OF FLOOR LAYOUT



2D FLOOR PLAN

- Studio TROIKA is a Building Information Modeling (BIM) based architecture firm that uses Revit as its software platform. We have been employing this technology for 5 years with great success on a wide range of project types and sizes.
- One of the most significant advantages to using BIM is our ability to communicate our ideas with our clients 3-dimensionally. Additionally, design time can be cut down considerably in all phases of the process as plans, elevations, and details are always in constant coordination.
- BIM allows us to visualize and schedule many components of construction such as 3D millwork, ceilings, structure, etc. leading to far fewer questions and coordination issues during construction.
- In addition to working entirely in 3D we have skilled renderers on staff to help our clients truly see what the space will look like prior to construction. At any point during the design process, we can provide our client with a rendered view of their choice. These images include the accurate representation of materials and lighting allowing the client to make informed decisions before final selections are made and any materials are purchased.
- Our experience with Building Information Modeling has allowed us to exploit the capabilities of the software enabling our clients to benefit from this next generation of visualization software.